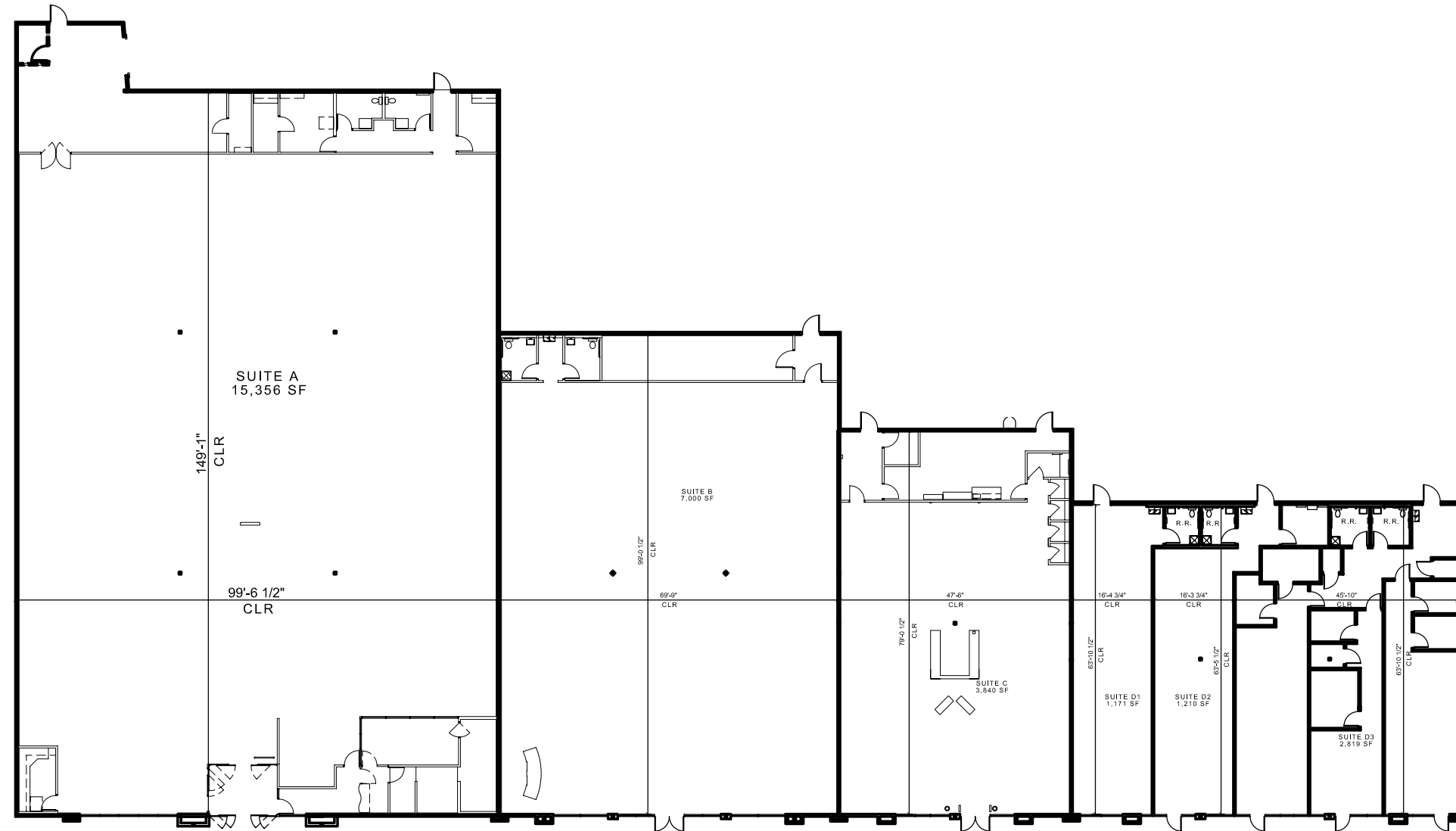


BLUE MOUNTAIN JUNCTION

4301 N. Main, Roswell, NM 88201



SUITE A
 GLA (GROSS LEASABLE AREA): 15,356 SF
 CEILING HEIGHT: Open to structure
 CLEAR HEIGHT: 16'-0"
 HEIGHT TO TOP OF STRUCTURE: 18'-6"
 ELECTRICAL SERVICE SIZE: 800A
 SIZE OF WATER LINE: 2"
 SIZE OF WASTE LINE: 4"
 SIZE OF BACK DOOR: 2 @ 3'-3"WX7'-0"H
 SIZE OF FRONT DOOR: 14'-0"WX7'-0"H Auto. Slgd.
 SIZE OF SIDE DOOR: None
 SIZE OF TRUCK DOOR: 8'-0"X9'-0"
 HVAC: 5 Units- 4 @ 10 tons, 1 @ 5 tons, gas heat

SUITE B
 GLA (GROSS LEASABLE AREA): 7,000 SF
 CEILING HEIGHT: 12'-3"
 CLEAR HEIGHT: 16'-2"
 HEIGHT TO TOP OF STRUCTURE: 18'-6"
 ELECTRICAL SERVICE SIZE: 400A
 SIZE OF WATER LINE: 1"
 SIZE OF WASTE LINE: 4"
 SIZE OF BACK DOOR: 3'-6"WX7'-0"H
 SIZE OF FRONT DOOR: Pair of 3'-0"WX7'-0"H
 SIZE OF SIDE DOOR: None
 SIZE OF TRUCK DOOR: None
 HVAC: 2 Units @ 15 tons ea., gas heat

SUITE C
 GLA (GROSS LEASABLE AREA): 3,840 SF
 CEILING HEIGHT: 12'-6"
 CLEAR HEIGHT: 16'-7"
 HEIGHT TO TOP OF STRUCTURE: 18'-11"
 ELECTRICAL SERVICE SIZE: 225A
 SIZE OF WATER LINE: 2"
 SIZE OF WASTE LINE: 4"
 SIZE OF BACK DOOR: 2 @ 3'-3'-6"WX7'-0"H
 SIZE OF FRONT DOOR: 2- 3'-0"WX7'-0"H
 SIZE OF SIDE DOOR: None
 SIZE OF TRUCK DOOR: None
 HVAC: 2 Units @ 7.5 tons ea., gas heat

SUITE D1
 GLA (GROSS LEASABLE AREA): 1,733 SF
 CEILING HEIGHT: 12'-9"
 CLEAR HEIGHT: 16'-11"
 HEIGHT TO TOP OF STRUCTURE: 19'-3"
 ELECTRICAL SERVICE SIZE: 800A
 SIZE OF WATER LINE: 2"
 SIZE OF WASTE LINE: 4"
 SIZE OF BACK DOOR: 3'-6"WX7'-0"H
 SIZE OF FRONT DOOR: 3'-0"WX7'-0"H
 SIZE OF SIDE DOOR: None
 SIZE OF TRUCK DOOR: None
 HVAC: 7.5 tons, gas heat

SUITE D2
 GLA (GROSS LEASABLE AREA): 1,073 SF
 CEILING HEIGHT: 12'-9"
 CLEAR HEIGHT: 16'-11"
 HEIGHT TO TOP OF STRUCTURE: 19'-3"
 ELECTRICAL SERVICE SIZE: 800A
 SIZE OF WATER LINE: 2"
 SIZE OF WASTE LINE: 4"
 SIZE OF BACK DOOR: 3'-6"WX7'-0"H
 SIZE OF FRONT DOOR: 3'-0"WX7'-0"H
 SIZE OF SIDE DOOR: None
 SIZE OF TRUCK DOOR: None
 HVAC: 7.5 tons, gas heat

SUITE D3
 GLA (GROSS LEASABLE AREA): 2,394 SF
 CEILING HEIGHT: 12'-9"
 CLEAR HEIGHT: 16'-11"
 HEIGHT TO TOP OF STRUCTURE: 19'-3"
 ELECTRICAL SERVICE SIZE: 800A
 SIZE OF WATER LINE: 2"
 SIZE OF WASTE LINE: 4"
 SIZE OF BACK DOOR: 3'-6"WX7'-0"H
 SIZE OF FRONT DOOR: 3'-0"WX7'-0"H
 SIZE OF SIDE DOOR: None
 SIZE OF TRUCK DOOR: None
 HVAC: 7.5 tons, gas heat

GROSS LEASABLE AREA: 31,396 SF

Geltmore LLC

6211 San Mateo Blvd. NE, Suite 130

Albuquerque, NM 87109-3534

505-294-8625 www.geltmore.com