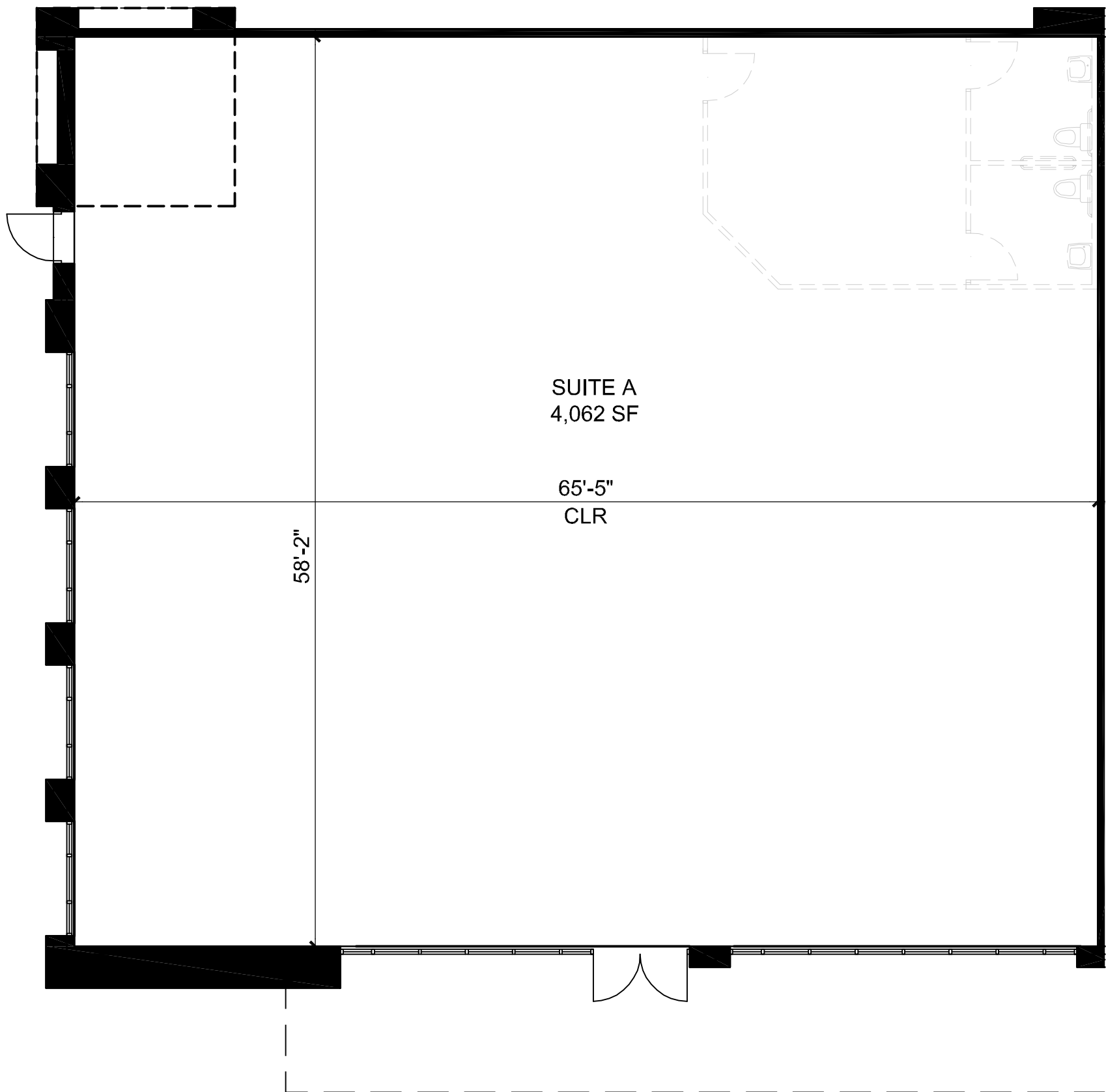
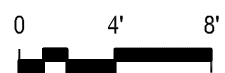


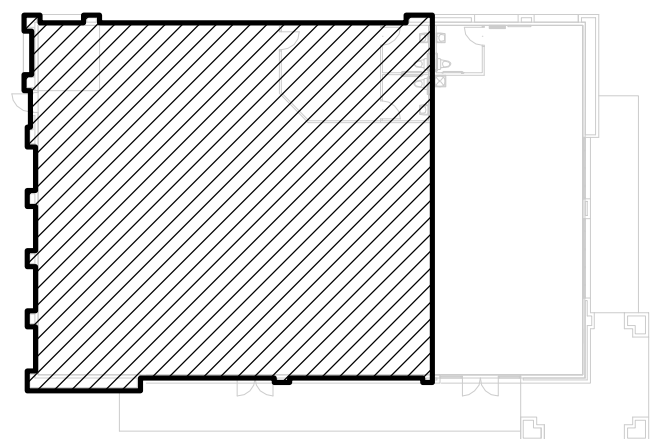
# WEST BLUFF

2800 Coors Blvd. NW, Albuquerque NM, 87120



## SUITE INFORMATION

GLA ( GROSS LEASABLE AREA):	4,062 SF
CEILING HEIGHT:	11'-0"
HEIGHT TO TOP OF STRUCTURE:	15'-4"
ELECTRICAL SERVICE SIZE:	200A
SIZE OF WATER LINE:	1"
SIZE OF WASTE LINE:	4"
SIZE OF BACK DOOR:	3'-0"W x 7'-0"H
HVAC:	????



KEYPLAN



BUILDING

# 5 SUITE: A

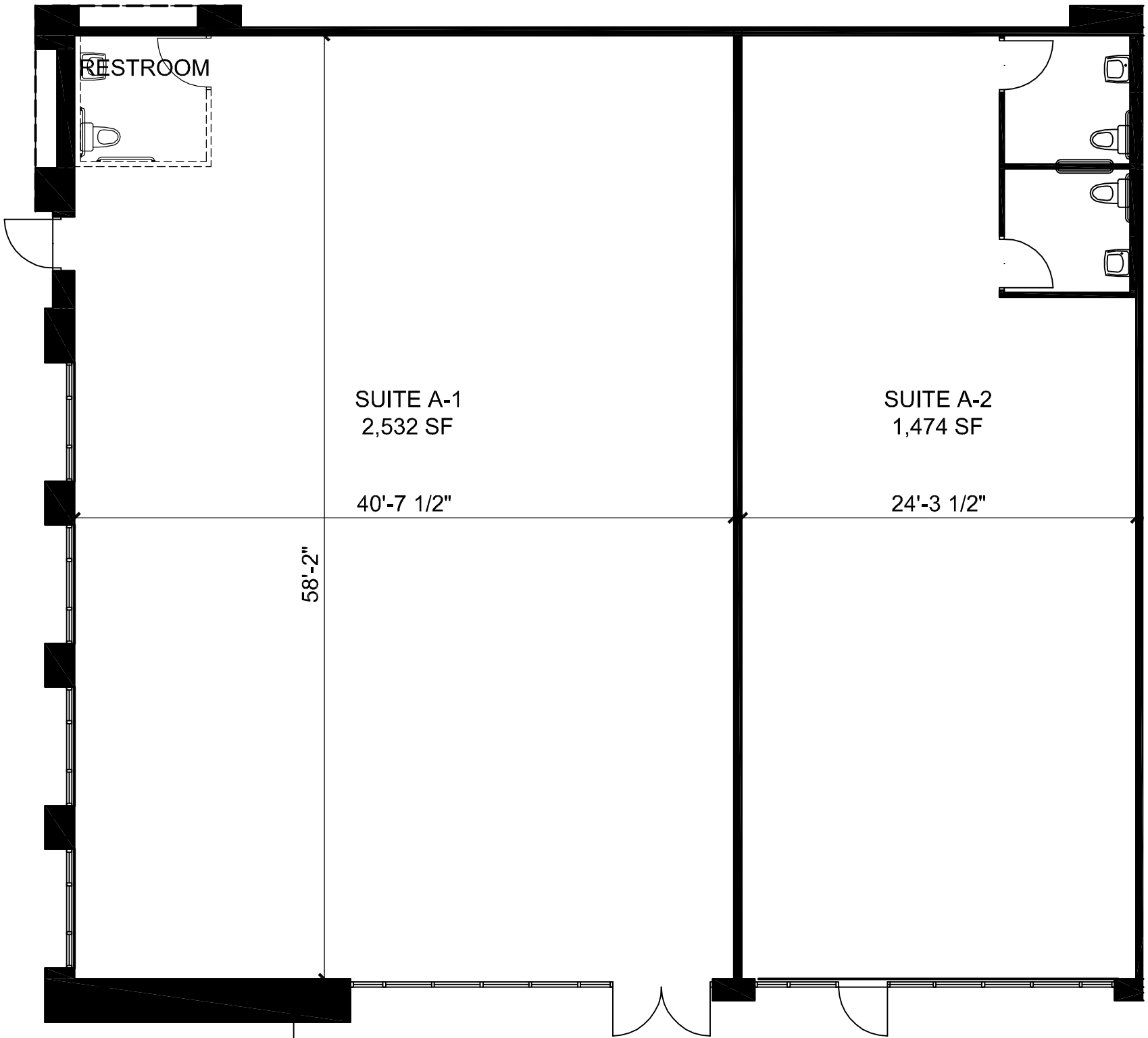
**Geltmore LLC**

6211 San Mateo Blvd. NE, Suite 130  
Albuquerque, NM 87109-3534  
505-294-8625    [www.geltmore.com](http://www.geltmore.com)

# WEST BLUFF

2800 Coors Blvd. NW, Albuquerque NM, 87120

0 4' 8'



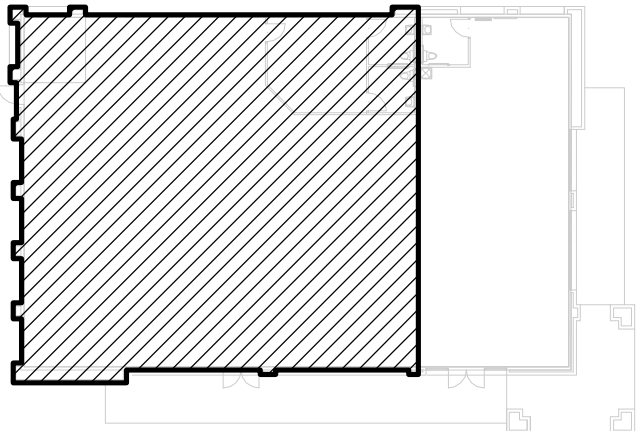
## SUITE INFORMATION (POSSIBLE DIVISION)

### SUITE A-1

GLA ( GROSS LEASABLE AREA):	2,532 SF
CEILING HEIGHT:	11'-0"
CLEAR HEIGHT:	14'-0"
HEIGHT TO TOP OF STRUCTURE:	15'-4"
ELECTRICAL SERVICE SIZE:	200A
SIZE OF WATER LINE:	1"
SIZE OF WASTE LINE:	4"
SIZE OF BACK DOOR:	None
SIZE OF FRONT DOOR:	1 Pair of 3'-0"W X 7'-0"H
SIZE OF SIDE DOOR:	3'-0"W X 7'-0"H
SIZE OF TRUCK DOOR:	None
HVAC:	4 Ton RTU, 5 Ton RTU, Gas Heat

### SUITE A-2

GLA ( GROSS LEASABLE AREA):	1,474 SF
CEILING HEIGHT:	11'-0"
CLEAR HEIGHT:	14'-0"
HEIGHT TO TOP OF STRUCTURE:	15'-4"
ELECTRICAL SERVICE SIZE:	200A
SIZE OF WATER LINE:	1"
SIZE OF WASTE LINE:	4"
SIZE OF BACK DOOR:	None
SIZE OF FRONT DOOR:	3'-0"W X 7'-0"H
SIZE OF SIDE DOOR:	None
SIZE OF TRUCK DOOR:	None
HVAC:	4 Ton RTU, Gas Heat



KEYPLAN



BUILDING

5 SUITE: A1 & A2

Geltmore LLC

6211 San Mateo Blvd. NE, Suite 130  
Albuquerque, NM 87109-3534  
505-294-8625    www.geltmore.com