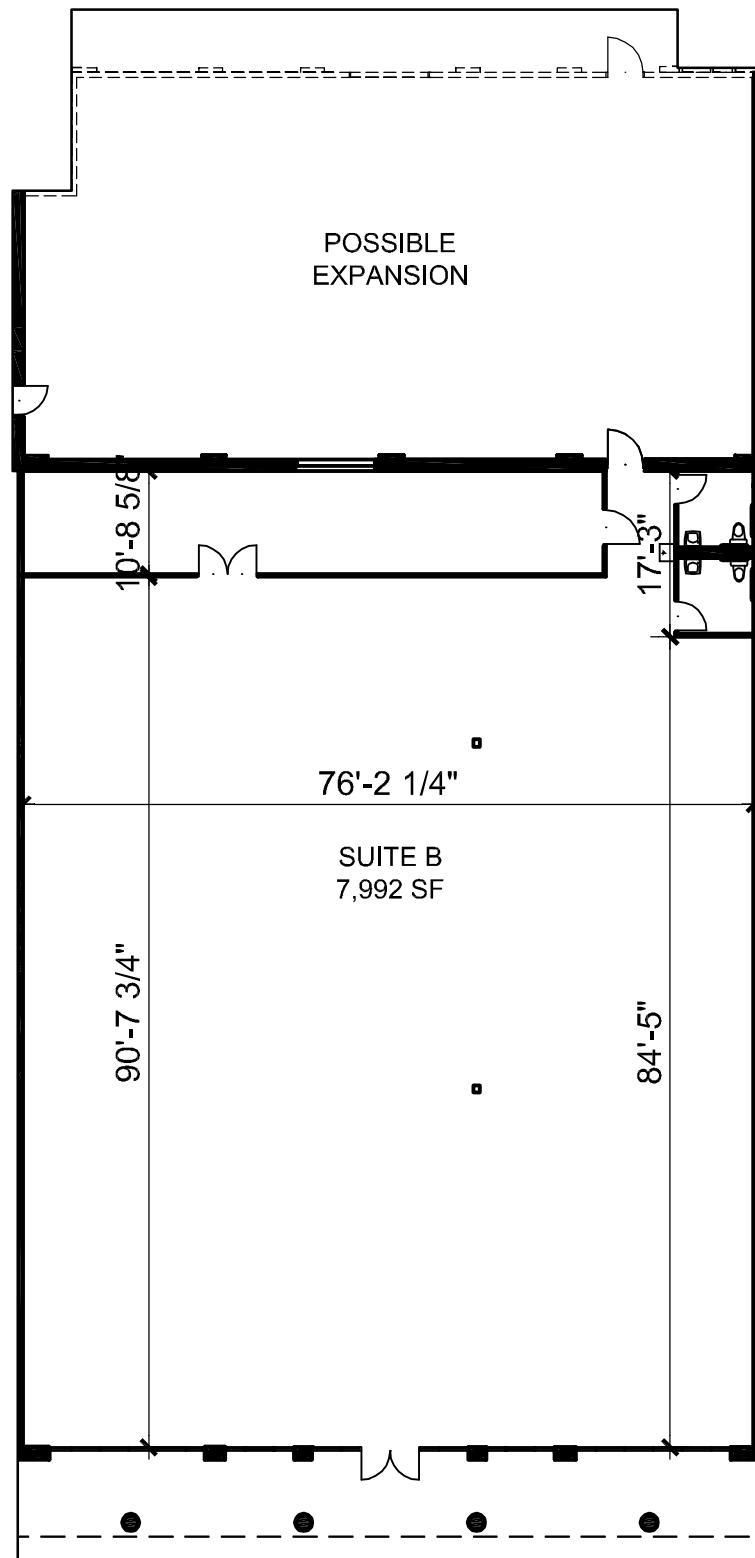
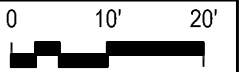


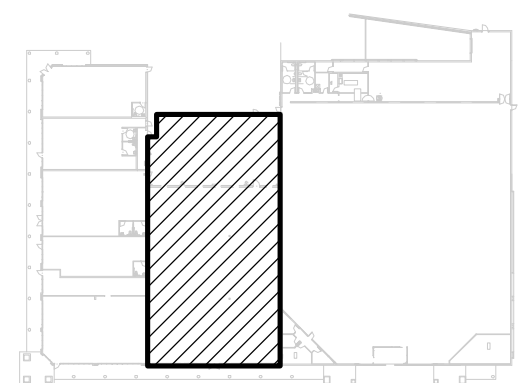
WEST BLUFF

5201 Ouray NW, Albuquerque NM, 87120



SUITE INFORMATION

GLA (GROSS LEASABLE AREA):	7,992 SF
CEILING HEIGHT:	11'-0"
CLEAR HEIGHT:	17'-6"
HEIGHT TO TOP OF STRUCTURE:	18'-8"
ELECTRICAL SERVICE SIZE:	400A
SIZE OF WATER LINE:	1-1/2"
SIZE OF WASTE LINE:	4"
SIZE OF BACK DOOR:	3'-0"W x 7'-0"H
SIZE OF FRONT DOOR:	1 Pair of 3'-0"W X 7'-0"H
SIZE OF SIDE DOOR:	None
SIZE OF TRUCK DOOR:	8'-0"W x 10'-0"H (Rolling Door)
HVAC:	(2) 12-1/2 Ton RTU, Gas Heat



KEYPLAN



BUILDING

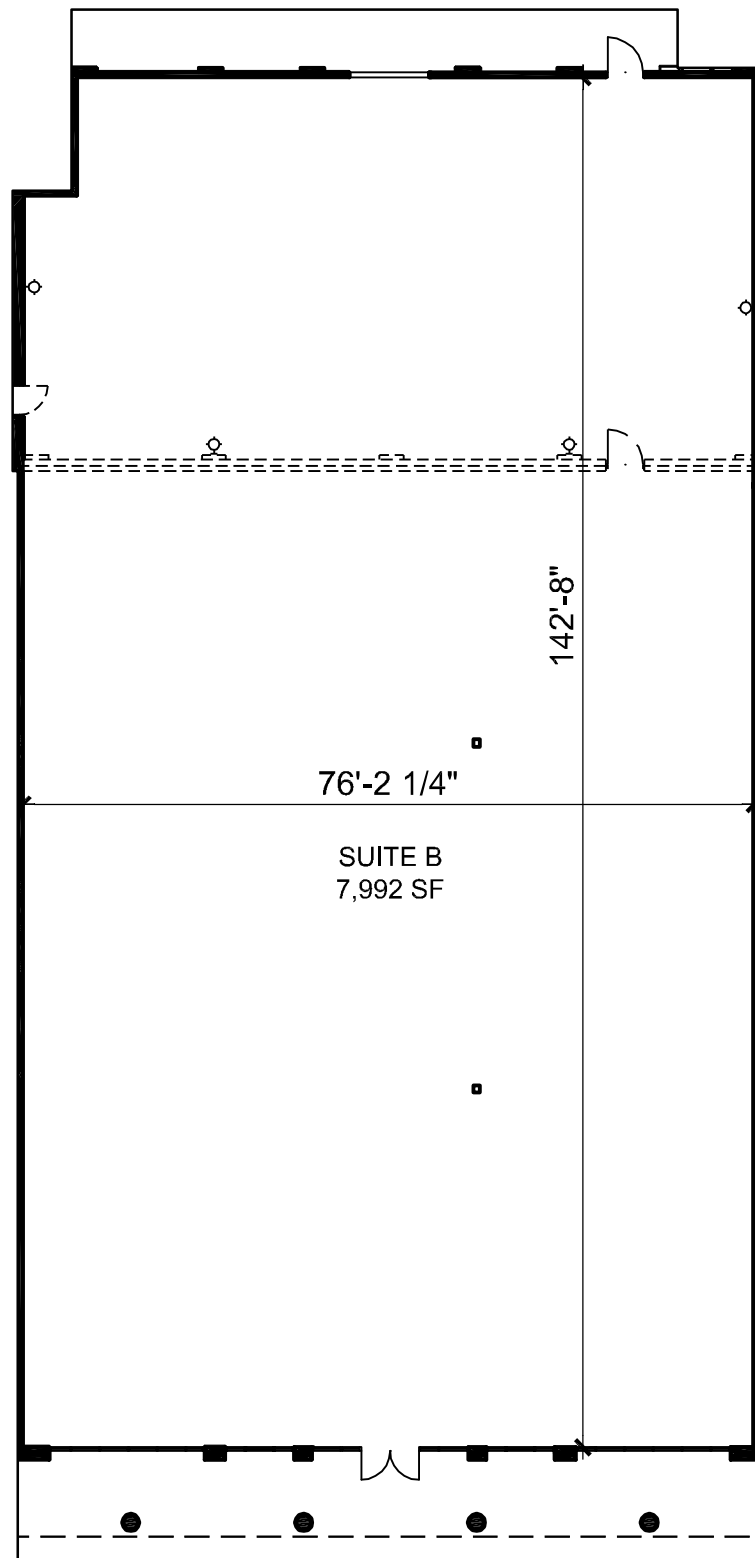
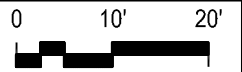
1 SUITE: B

Geltmore LLC

6211 San Mateo Blvd. NE, Suite 130
Albuquerque, NM 87109-3534
505-294-8625 www.geltmore.com

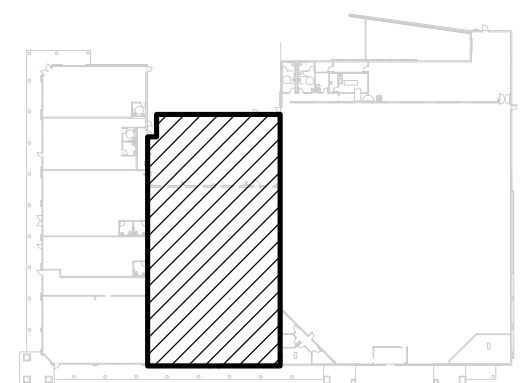
WEST BLUFF

5201 Ouray NW, Albuquerque NM, 87120



SUITE INFORMATION

GLA (GROSS LEASABLE AREA):	7,992 SF
CEILING HEIGHT:	11'-0"
HEIGHT TO TOP OF STRUCTURE:	18'-0"
ELECTRICAL SERVICE SIZE:	400A, 200A
SIZE OF WATER LINE:	1-1/2"
SIZE OF WASTE LINE:	4"
SIZE OF BACK DOOR:	3'-0"W x 7'-0"H
HVAC:	(2) 12-1/2 Ton RTU, Gas Heat



KEYPLAN



BUILDING

1 SUITE: B

Geltmore LLC

6211 San Mateo Blvd. NE, Suite 130
Albuquerque, NM 87109-3534
505-294-8625 www.geltmore.com