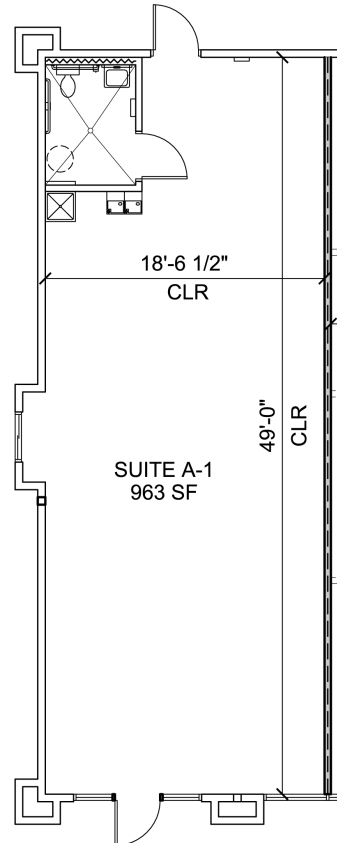


BLUE MOUNTAIN JUNCTION

4411 N. Main, Roswell, NM 88201



Drive-Thru Available



SUITE INFORMATION

GLA (GROSS LEASABLE AREA): 963 SF
CEILING HEIGHT: 10'-0"
CLEAR HEIGHT: 14'-7"
HEIGHT TO TOP OF STRUCTURE: 16'-0"
ELECTRICAL SERVICE SIZE: 150A
SIZE OF WATER LINE: 2"
SIZE OF WASTE LINE: 4"
SIZE OF BACK DOOR: 3'-0"WX7'-0"H
SIZE OF FRONT DOOR: 3'-0"WX7'-0"H
SIZE OF SIDE DOOR: None
SIZE OF TRUCK DOOR: None
HVAC: 1 Unit- 3 tons, gas heat



KEYPLAN



BUILDING

BSUITE:A-1

Geltmore LLC

6211 San Mateo Blvd. NE, Suite 130
Albuquerque, NM 87109-3534
505-294-8625 www.geltmore.com