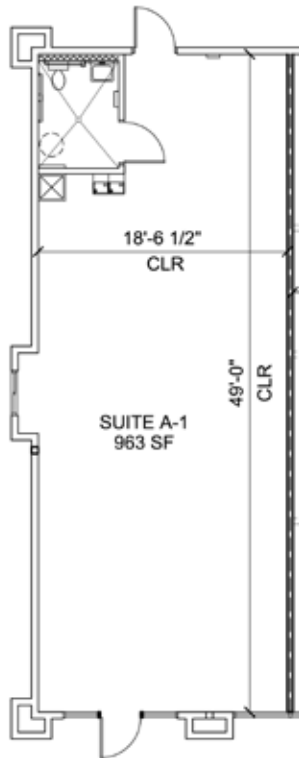


BLUE MOUNTAIN JUNCTION

4411 N. Main, Roswell, NM 88201



Drive-Thru Available



SUITE INFORMATION

| | |
|-----------------------------|--------------------------|
| GLA (GROSS LEASABLE AREA): | 963 SF |
| CEILING HEIGHT: | 10'-0" |
| CLEAR HEIGHT: | 14'-7" |
| HEIGHT TO TOP OF STRUCTURE: | 16'-0" |
| ELECTRICAL SERVICE SIZE: | 150A |
| SIZE OF WATER LINE: | 2" |
| SIZE OF WASTE LINE: | 4" |
| SIZE OF BACK DOOR: | 3'-0"WX7'-0"H |
| SIZE OF FRONT DOOR: | 3'-0"WX7'-0"H |
| SIZE OF SIDE DOOR: | None |
| SIZE OF TRUCK DOOR: | None |
| HVAC: | 1 Unit- 3 tons, gas heat |



KEYPLAN



Geltmore LLC

6211 San Mateo Blvd. NE, Suite 130
Albuquerque, NM 87109-3534
505-294-8625 www.geltmore.com

BUILDING

BSUITE:A-1

Blue Mountain Junction

4301 N. Main Street
Roswell, NM 88201-0318

Geltmore, LLC

6211 San Mateo Blvd. NE, Suite 130
Albuquerque, NM 87109-3534
505-294-8625 www.geltmore.com